

Holders for Suction Cups HT-SG

Suction cup connection for G-, NPT-, M-threads and rectangular adapters



Suitability for industry specific applications

Application

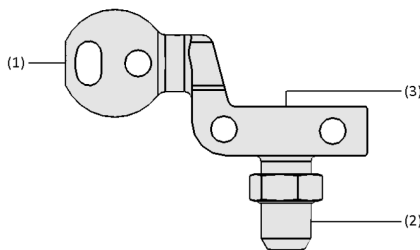
- Holder for mounting vacuum suction cups on tooling beams
- For vacuum suction cups with connectors for G, NPT and M threads and right-angled adapters



Holders for Suction Cups HT-SG

Design

- Version HT-SG (slim design)
- Connection for tooling beams: Ball (A3: \varnothing 28.5 mm; A5: \varnothing 32 mm) or "Apple-Core" cylinder (A2: \varnothing 19 mm) (1)
- Connection for vacuum suction cups (2), vacuum connection (3)



System design Holders for Suction Cups HT-SG



Holders for suction cup HT-SG in combination with bell-shaped suction cups SAX for handling sheet metal parts

Product highlights

- Flexible use on tooling traverses, fast exchange and short set-up times
- Thanks to lightweight aluminium construction suitable for dynamic processes and high throughputs
- Versatile use for vacuum suction cups with various G, NPT, M threads and rectangular adapters (quick-change system)
- Customer-specific configuration, e.g. with vacuum sensors and suction cups

Holders for Suction Cups HT-SG

Suction cup connection for G-, NPT-, M-threads and rectangular adapters

Designation code Holders for Suction Cups HT-SG

HT-SG	–	A2	–	46	–	RA
1		2		3		4

1 – Abbreviated designation

Code	Type
HT-SG	Holder for suction cup

2 – Tooling connection

Code	Connection in mm
A2	ø 19, pin
A3	ø 28.5, ball
A5	ø 32, ball

3 – Width

Code	Width in mm
22	22
46	46

4 – Suction cup connection

Code	Anschluss
G1/4-AG	G1/4-AG (AG = male (M))
G3/8-AG	G3/8-AG
NPT1/4-AG	NPT1/4-AG
NPT3/8-AG	NPT3/8-AG
RA	Right-angled adapter

The holders for suction cups HT-SG are delivered as a ready-to-connect product.

Ordering data Holders for Suction Cups HT-SG

Type	Part no.
HT-SG A2 22 G1/4-AG	10.07.06.00445
HT-SG A2 22 G3/8-AG	10.07.06.00450
HT-SG A2 22 NPT1/4-AG	10.07.06.00448
HT-SG A2 22 NPT3/8-AG	10.07.06.00453
HT-SG A3 22 G1/4-AG	10.07.06.00342
HT-SG A3 22 G3/8-AG	10.07.06.00344
HT-SG A3 22 NPT1/4-AG	10.07.06.00446
HT-SG A3 22 NPT3/8-AG	10.07.06.00451
HT-SG A5 22 G1/4-AG	10.07.06.00444
HT-SG A5 22 G3/8-AG	10.07.06.00449
HT-SG A5 22 NPT1/4-AG	10.07.06.00447
HT-SG A5 22 NPT3/8-AG	10.07.06.00452
HT-SG 46 RA	10.07.06.00336

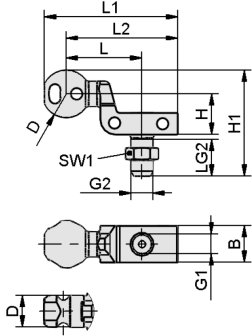
Technical data Holders for Suction Cups HT-SG

Type	Weight [g]
HT-SG A2 22 G1/4-AG	62
HT-SG A2 22 G3/8-AG	70
HT-SG A2 22 NPT1/4-AG	54
HT-SG A2 22 NPT3/8-AG	59
HT-SG A3 22 G1/4-AG	76
HT-SG A3 22 G3/8-AG	84
HT-SG A3 22 NPT1/4-AG	70
HT-SG A3 22 NPT3/8-AG	73
HT-SG A5 22 G1/4-AG	88
HT-SG A5 22 G3/8-AG	98
HT-SG A5 22 NPT1/4-AG	81
HT-SG A5 22 NPT3/8-AG	84
HT-SG 46 RA	66

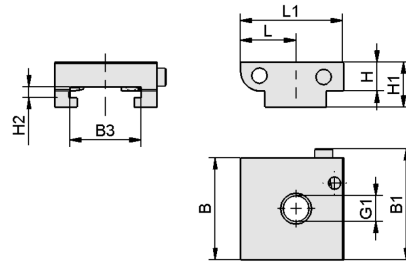
Holders for Suction Cups HT-SG

Suction cup connection for G-, NPT-, M-threads and rectangular adapters

Design data Holders for Suction Cups HT-SG



HT-SG AG



HT-SG RA

Holders for Suction Cups HT-SG

Suction cup connection for G-, NPT-, M-threads and rectangular adapters

Design data Holders for Suction Cups HT-SG

Type	B [mm]	B1 [mm]	B3 [mm]	D [mm]	G1	G2	H [mm]	H1 [mm]	H2 [mm]	L [mm]	L1 [mm]	L2 [mm]	LG2 [mm]	SW1 [mm]
HT-SG A2 22 G1/4- AG	22	-	-	19	G1/4"-F	G1/4"-M	25	59	-	40	73	61	22	17
HT-SG A2 22 G3/8- AG	22	-	-	19	G1/4"-F	G3/8"-M	25	59	-	40	73	61	22	22
HT-SG A2 22 NPT1/4- AG	22	-	-	19	G1/4"-F	NPT1/4-M	25	52	-	40	73	61	15	-
HT-SG A2 22 NPT3/8- AG	22	-	-	19	G1/4"-F	NPT3/8-M	25	52	-	40	73	61	15	-
HT-SG A3 22 G1/4- AG	22	-	-	29	G1/4"-F	G1/4"-M	25	64	-	46	80	67	22	17
HT-SG A3 22 G3/8- AG	22	-	-	29	G1/4"-F	G3/8"-M	25	64	-	46	80	67	22	22
HT-SG A3 22 NPT3/8- AG	22	-	-	29	G1/4"-F	NPT3/8-M	25	57	-	46	80	67	15	-
HT-SG A3 22 NPT1/4- AG	22	-	-	29	G1/4"-F	NPT1/4-M	25	57	-	46	80	67	15	-
HT-SG A5 22 G1/4- AG	22	-	-	32	G1/4"-F	G1/4"-M	25	66	-	46	82	67	22	17
HT-SG A5 22 G3/8- AG	22	-	-	32	G1/4"-F	G3/8"-M	25	66	-	46	82	67	22	22
HT-SG A5 22 NPT1/4- AG	22	-	-	32	G1/4"-F	NPT1/4-M	25	59	-	46	82	67	15	-
HT-SG A5 22 NPT3/8- AG	22	-	-	32	G1/4"-F	NPT3/8-M	25	59	-	46	82	67	15	-
HT-SG 46 RA	46	50	32	-	G1/4"-F	-	13	21	5	25	47	-	-	-